



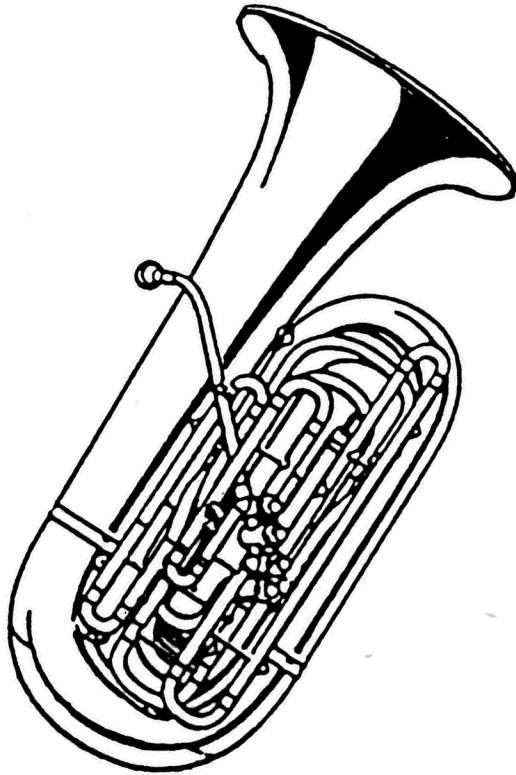
Where your music begins.



226 Main St. Portland, CT. 06480

860-342-2270

Connvalley.net

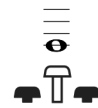
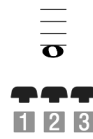
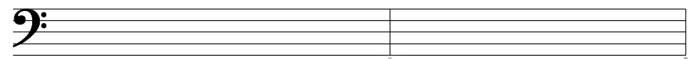
Tuba Fingerings



Open 
Pressed 

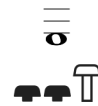
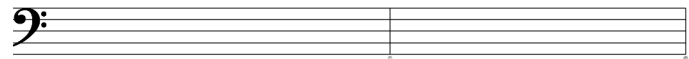
E

F



F# Gb

G

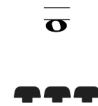
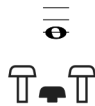
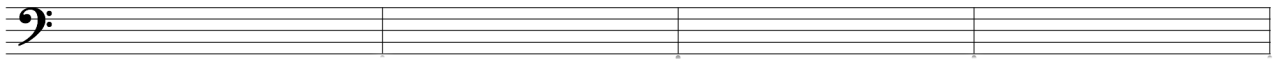


G# Ab

A

A# Bb

B

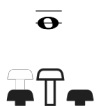


C

C# Db

D

D# Eb



E F F# Gb G

The first system shows a bass clef staff with four measures. The notes are E, F, F# Gb, and G. Below each measure is a guitar fret diagram: E (2nd fret, 1st and 2nd strings), F (1st fret, 1st, 2nd, and 3rd strings), F# Gb (2nd fret, 1st and 2nd strings), and G (3rd fret, 3rd, 4th, and 5th strings).

G# Ab A A# Bb B

The second system shows a bass clef staff with four measures. The notes are G#, Ab, A, A#, Bb, and B. Below each measure is a guitar fret diagram: G# (3rd fret, 1st and 2nd strings), Ab (4th fret, 1st and 2nd strings), A (2nd fret, 1st, 2nd, and 3rd strings), A# (3rd fret, 1st and 2nd strings), Bb (4th fret, 1st and 2nd strings), and B (5th fret, 3rd, 4th, and 5th strings).

C C# Db D D# Eb

The third system shows a bass clef staff with four measures. The notes are C, C#, Db, D, D#, and Eb. Below each measure is a guitar fret diagram: C (1st fret, 1st and 2nd strings), C# (2nd fret, 1st and 2nd strings), Db (3rd fret, 1st and 2nd strings), D (2nd fret, 1st, 2nd, and 3rd strings), D# (3rd fret, 1st and 2nd strings), and Eb (4th fret, 1st and 2nd strings).

E F F# Gb G

The fourth system shows a bass clef staff with four measures. The notes are E, F, F# Gb, and G. Below each measure is a guitar fret diagram: E (2nd fret, 1st and 2nd strings), F (1st fret, 1st, 2nd, and 3rd strings), F# Gb (2nd fret, 1st and 2nd strings), and G (3rd fret, 3rd, 4th, and 5th strings).